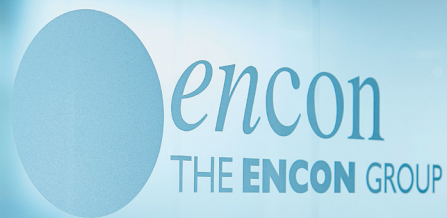


## Construction Products Overview

Concrete & Reinforcement Accessories  
Construction Chemicals | Geotechnical  
Groundworking Products | Waterproofing  
Masonry Components

**The Distributor of Choice**



Encon Construction Products is a specialist distribution division of The Encon Group - the UK's No 1 independent distributor of building and project solutions. Other specialist distribution divisions in the Group include Encon Insulation, Nevill Long Interior Systems and Encon Technical Solutions. Our Group also benefits from dedicated teams in passive fire protection and infrastructure.

Through our national branch network, Encon Construction Products offers an extensive choice of products and systems from market leading brands that span six key areas:

**Concrete & Reinforcement Accessories, Construction Chemicals, Geotechnical, Groundworking Products, Masonry Components and Waterproofing.**

Working with market leading brands



and many more...



For detailed product information and to view the complete range, visit our website or download our dedicated Product Guide at [www.encon.co.uk](http://www.encon.co.uk)

Concrete & Reinforcement Accessories



Construction Chemicals



Geotechnical



Groundworking Products



Masonry Components



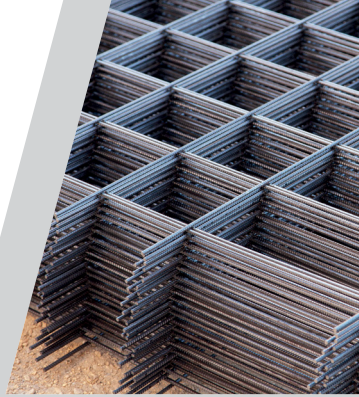
Waterproofing





## Concrete & Reinforcement Accessories

A full product range for concrete and groundwork contractors. From tie bars and ancillaries to numerous types of spacers and specialist products for structural concrete such as shear load connectors, couplers and balcony connectors.



## Construction Chemicals

Primarily for use with concrete and includes a range for other applications too. High quality resin anchors for formwork and permanent heavy duty fixing, polysulphide joint sealants for concrete movement joints, cleaning products for masonry, and retarders and surface hardeners for concrete. We also supply a wide range of solutions for builders' merchants.



## Geotechnical

A comprehensive range of geotechnical engineering solutions, ensuring that the natural environment is correctly prepared for your projects. Products include woven and permeable non woven geotextiles, geogrids, coastal erosion control and environmental protection.



## Groundworking Products

A full range specifically for groundwork preparation, including gas protection and damp proof membranes, associated ancillaries and construction grout. We also stock in situ sacrificial formwork products such as Beamform and Hyrib and insulation for floor slabs.



## Masonry Components

Every brickwork and masonry ancillary you will ever need, including bespoke masonry support and windpost systems, channel, brickwork reinforcement, wall ties and restraints, high performance damp proof course systems (DPCs), ventilation, firestopping and insulation.



## Waterproofing

An outstanding choice of pre and post applied sheet membrane systems, as well as liquid waterproofing and tanking products and all the required ancillaries, including tapes, adhesives and protection boards.



## Why choose Encon?

### Trusted Brands, from Stock

Our strong relationships with market leading brands across all our divisions ensure customers benefit from wide stock availability and reassurance of supply through our 22 branches. This means all the solutions you need, from one main supplier.

### Unrivalled Service, Nationwide

Our customers are our number one priority, and we aim to make it easy for you. Our nationwide coverage means there is always an Encon branch within reach to support your project needs. Our fully stocked warehouses and yards, convenient collection service, dedicated vehicle fleet and flexible deliveries ensure you get all the products you need, on time, to specification and in the volumes you need. Deliveries include split loads, next day or just in time.

### Expert Teams

Our trained product champions and experienced teams provide customers with specialist and in depth knowledge so you can confidently make the right choice for your building projects.

### Quality & Safety Assured

Health and safety is always top of mind, in our workplace, on site and on the road. Our HSEQ team continually strives to oversee, implement and improve health and safety procedures throughout our business. We are fully accredited to ISO 9001, ISO 14001, ISO 45001 and ISO 19443, and carefully consider the social and environmental impacts of our business.



## Standards & Accreditations



## Solutions for Builders' Merchants

As an integral part of your supply chain, our branches and teams provide all the products and support merchants need.

### Tailored Range

Across our six main product categories, key solutions for merchants are listed below. View the complete range in our online [Product Catalogue](#).

#### Construction Products Category

##### Concrete & Reinforcement Accessories

*Reinforcement Mesh, Dowel Bars, Concrete Spacers, Curing Agents and more.*

##### Construction Chemicals

*A full range of Chemicals including Cementitious Grouts, Technical Mortars and Sealants. **Ancillaries:** Primers, Tapes, Adhesives, Tools and Accessories.*

##### Geotechnical

**Geotextiles and Geogrids:** TenCate Polyfelt TS1000 4.5 x 100m, TenCate Miragrid GX 30/30. **Erosion Control:** TERRAM Geocell.

##### Groundworking Products

*Damp Proof Membranes and Vapour Barriers. **Ancillaries:** Jointing Tapes, Vapour Tapes and Sealants.*

##### Masonry Components

*Zedex DPC and Systems, Wall Ties, Cramps and Restraint Fixings. Windposts and Masonry Support. **Ancillaries:** Jointing Tapes, Joint Fillers, Adhesives and Sealants.*

##### Waterproofing

*GCP Waterproofing Systems, Visqueen Self-adhesive Membrane, Waterstops. **Ancillaries:** Primers, Detailing Strips.*

### Flexible Service

Encon's nationwide coverage, dedicated vehicle fleet, bespoke deliveries, and branch trade counters underpin our flexible service:

- Convenient & efficient deliveries
- Small or split loads
- Fast-track collections
- Our delivery service includes:
  - Direct to your branch or to site
  - Next day
  - Just in time



## Encon Branch Network


Our nationwide branch network and vast vehicle fleet ensure products are delivered on time, in full and to specification.

All our branches offer an extensive choice of solutions from leading brands, supplying builders' merchants what they need, when they need it for their customers' projects. Other product ranges include building and technical insulation, external façades, drywall systems and accessories, passive fire protection and much more.

**Scan the QR code to browse our full list of branches and contact details.**



### KEY

-   Encon & Nevill Long
-  Encon
-  Nevill Long
-  Head Office

